

POST-SPAWN DISPERSAL
BY ALI SHAKOOR
DETROIT RIVER WORKSHOP
SEMINAR #6



OVERVIEW

1. HOW LONG DO WALLEYE STAY IN RIVER AFTER SPAWN?
2. MIGRATION ROUTES BACK OUT INTO LAKE
3. STRUCTURES AND PATHS WALLEYE USE BACK INTO THE LAKE
4. HOW WALLEYE DISPERSE ONCE BACK INTO LAKE

James Valentine
SPORTFISHING

IMMEDIATE POST-SPAWN

1. VERY LITTLE, IF ANY, FEEDING ACTIVITY DURING SPAWN-BUT WILL STRIKE
2. ENERGY HAS BEEN DEDICATED TO GAMETES SINCE FALL
3. SPAWN IS ENERGETICALLY/PHYSICALLY COSTLY TO WALLEYE

James Valentine
SPORTFISHING

IMMEDIATE POST-SPAWN HOW LONG DO THEY STAY IN THE RIVER?

- 1. NOT ALL DETROIT RIVER SPAWNING FISH MIGRATE**
- 2. NOT ALL SOME FROM LAKE ERIE EITHER**
- 3. FISH COME IN TO SPAWN IN MULTIPLE WAVES OVER TIME**
- 4. EARLY SPAWNERS LEAVE FAST (BIGGER FISH?)
SOME HANG AROUND LONGER**
 - WHY? HOW DO YOU KNOW?**

James Valentine
SPORTFISHING

POST-SPAWN MOVEMENTS OUT OF THE RIVER

1. REMEMBER THE RIVER HAS TWO MOUTHS
 - FISH WILL BE LEAVING EACH END
2. EXIT DIRECTION EFFECTS HOW/WHEN THEY LEAVE
 - SOUTH EXITING FISH CAN RIDE CURRENTS
 - NORTH EXITING FISH HAVE TO FIGHT CURRENTS
 - WHICH FISH MAY TAKE LONGER??

James Valentin
SPORTFISHING

STRUCTURES AND PATHS POSSIBLE ROUTES OUT OF THE RIVER

NORTH MOVING FISH

- **FIGHTING CURRENT SO WILL UTILIZE CURRENT BREAKS MORE**
- **BOTTOM HAS LOTS OF "STRUCTURE" THAT BLOCKS FLOW**
- **UNDERWATER POINTS/HUMPS**
- **BENDS IN THE RIVER**
- **FRONTSIDES OF HOLES**

James Valentine
SPORTFISHING

STRUCTURES AND PATHS

POSSIBLE ROUTES OUT OF THE RIVER

SOUTH MOVING FISH

- **LAZY, THEY CAN RIDE CURRENT DOWN**
- **SOMETIMES HIGHER IN THE WATER COLUMN**
 - **DON'T NEED BREAKS TO MOVE**
- **UTILIZE SAME STRUCTURE AS "NORTH" FISH**
 - **PUTTING ON THE FEED BAGS VS LEAVING**

James Valentine
SPORTFISHING

STRUCTURES AND PATHS

POSSIBLE ROUTES OUT OF THE RIVER

- 1. SIMILAR ROUTES ENTERING AND LEAVING**
- 2. FISH WILL “TAKE A BREAK” IN CERTAIN AREAS**
 - **REST, FEED**
 - **MORE VULNERABLE HERE**
 - **WHERE THEY STAGE MAY DICTATE ROUTES BACK INTO LAKE**
 - **LAKE ERIE AND ST. CLAIR**

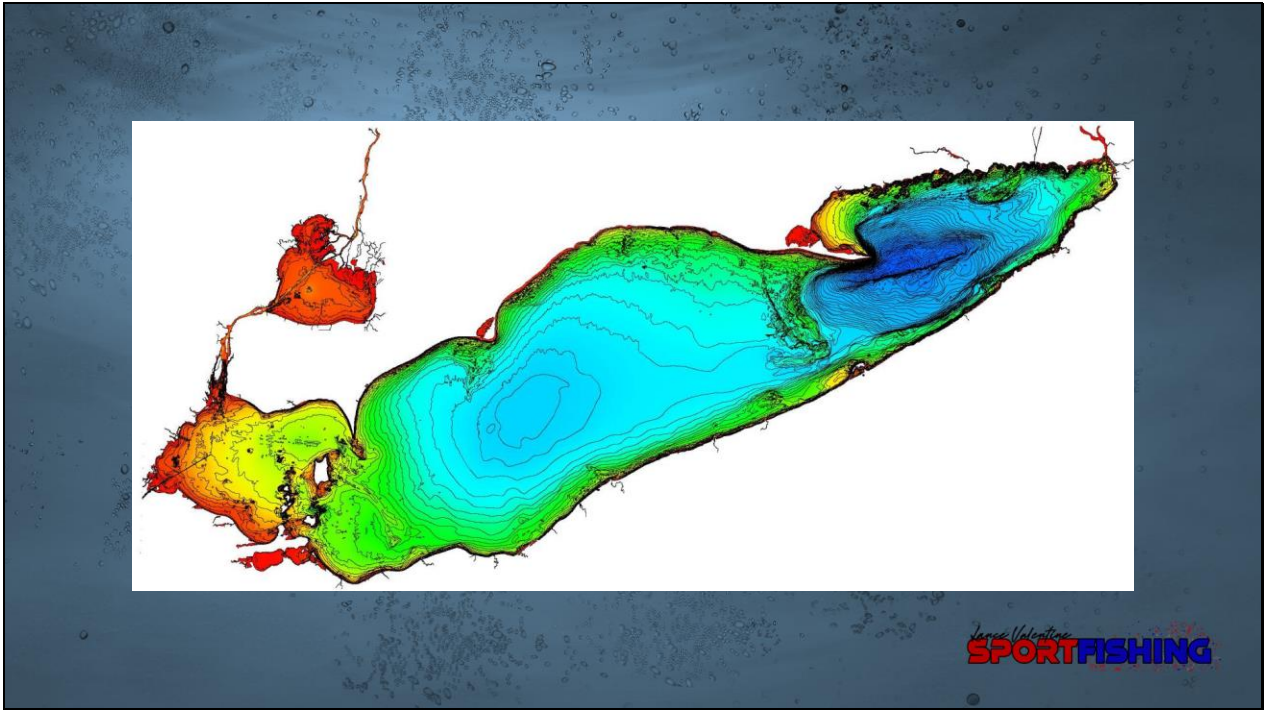
James Valentine
SPORTFISHING

LAKE DISPERSAL

**WHICH WAY DID HE GO, WHICH WAY DID HE GO?
GO?**

- 1. INFINITE NUMBER OF PATHWAYS OUT OF THE RIVER**
- 2. • WHY DOESN'T ANYONE FISH THE MOUTHS?
• MICHIGAN, OHIO, OR CANADA?**
- 3. WATER TEMP COMES INTO PLAY AS SEASON
PROGRESSES**

James Valentine
SPORTFISHING



NAILING DOWN TRAVEL ROUTES

- 1. GET OUT OF YOUR BACKYARD**
- 2. NETWORK**
WAYPOINTS FOR EVERY FISH WITH INFO
- 3. COMPARE WAYPOINTS TO ZOOMED-IN MAPPING**
- 4. EXPERIENCE**
- 5. LEWT EXAMPLE**

James Valentine
SPORTFISHING